



TOKYO SEIMITSU HATSUJO.CO.,LTD



WING BEND WING BEND PLUS

REDEFINING MARK-FREE FORMING

TSH
TOKYO SHIMIZU HARISHIRO CO., LTD.

CONTENT



01

About Us

02

Key Features

03

WB Series

04

Accessories &
Adapters

05

How to Order

ABOUT US



Tokyo Seimitsu Hatsujo.co.,ltd



Establishment 1930



**134 Higashikata-Cho, Tsuzuki-Ku,
Yokohama-City,
Kanagawa-Pref., Post-Code 224-0045
JAPAN**



+81-45-624-9841



<http://www.to-hatsu.co.jp/>

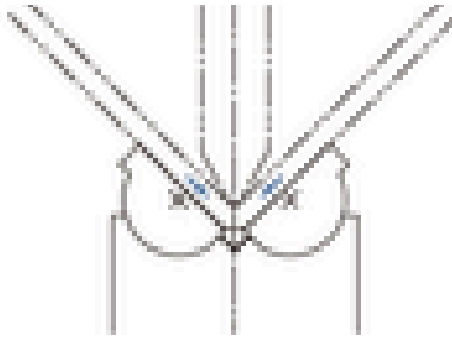


KEY FEATURES

Redefining Mark-Free Forming

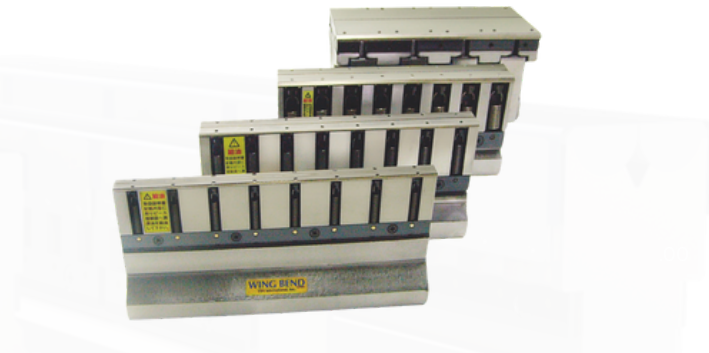


WING BEND

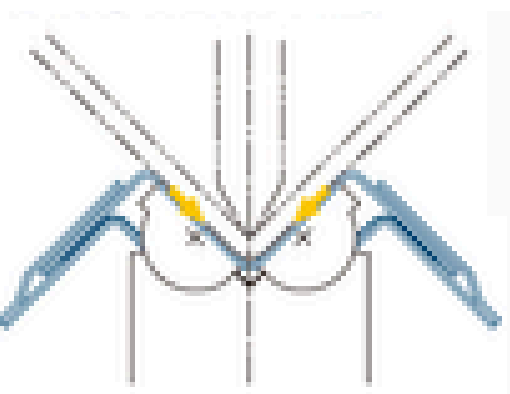


Features of Wing Bend :

- Short flanges with minimal marking
- Holes close to the bending line without deformation
- Ideal for diagonal and tapered bending
- Repeatability for punched sheets with steady flanges and exact angles
- Bulb and chequered plates with minimal marking at the visible surface
- No tool contamination while bending galvanized material or aluminium
- No reworking of workpieces necessary
- Increased product quality
- Less tool change



WING BEND Plus



Wing Bend Plus is full version of Wing Bend

- Realization the perfect mark free and high accuracy, high quality bending of beautiful outside radius without a trace that was not possible in the Wing Bend while leaving the good Wing Bend
- We improved durability performance by implementing slider
- Wing Bend Plus is the most suitable for stainless steel bending in disfavor with bending mark and defect

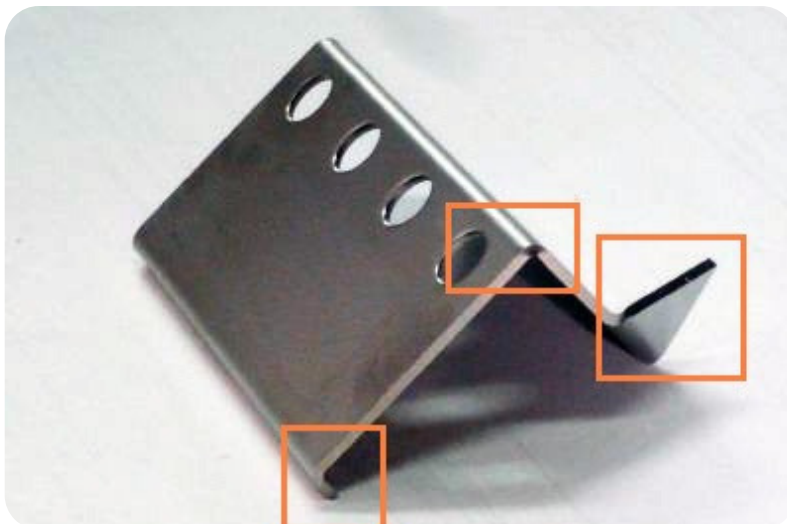
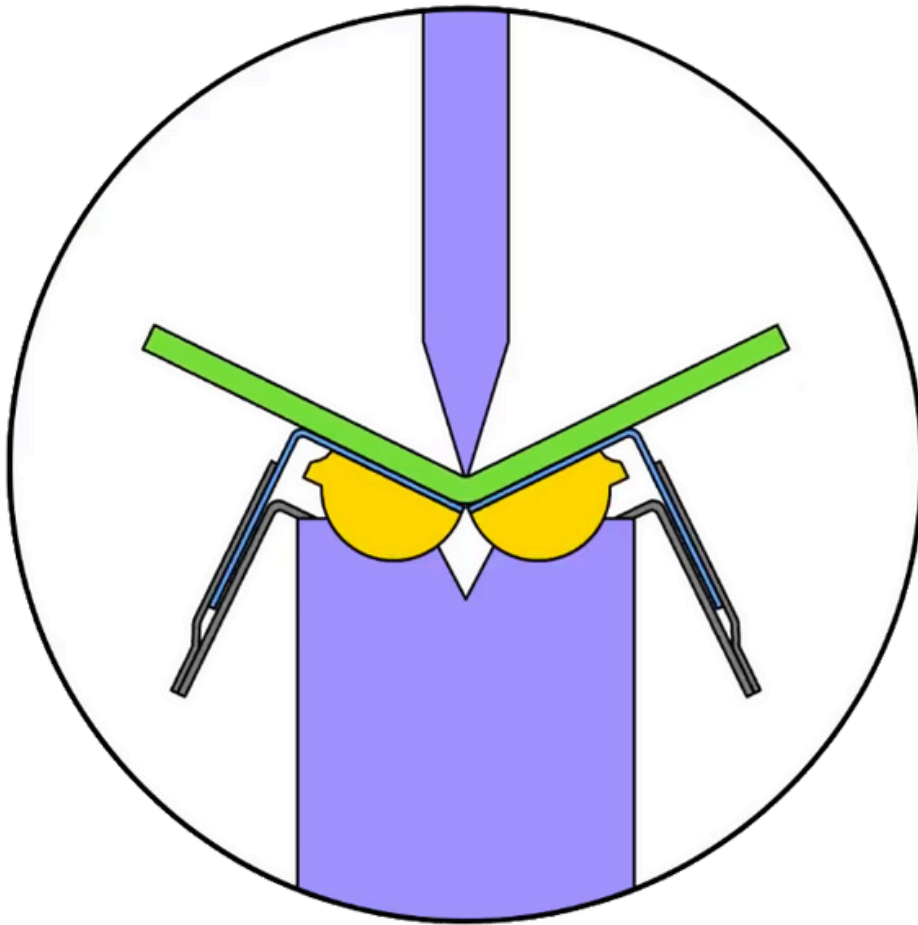


KEY FEATURES

further enhances mark-free bending



WING BEND Plus



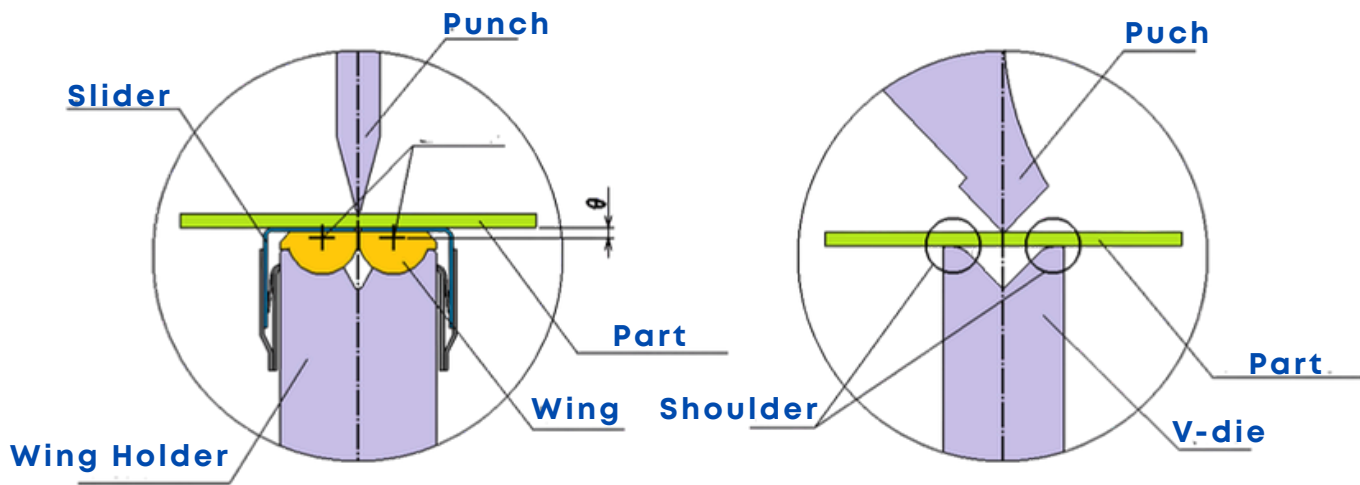
KEY FEATURES

further enhances mark-free bending



WING BEND Plus

V-Die



V-die

WING BEND

WING BEND Plus

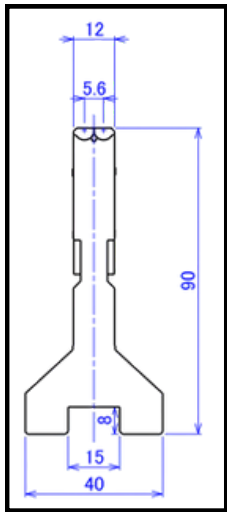


WB SERIES

STANDARD TYPE



Wing Bend

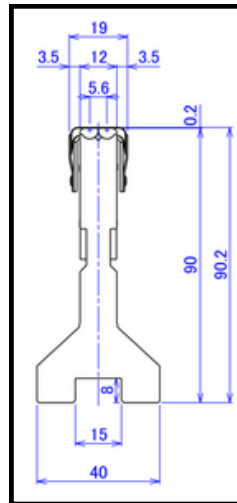


WB120

500 (kN/m)

- Die Length 50/100/200/500 mm
- Material thickness: 0.3~1.2

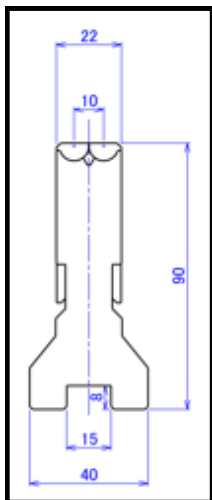
Wing Bend Plus



WBP120

500 (kN/m)

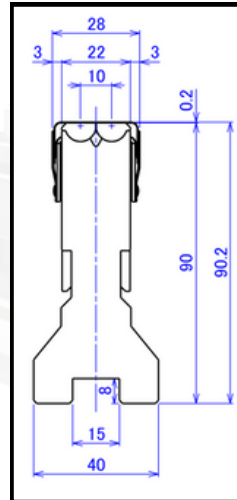
- Die Length 50/100/200/500 mm
- Material thickness: 0.3~1.2



WB230

700 (kN/m)

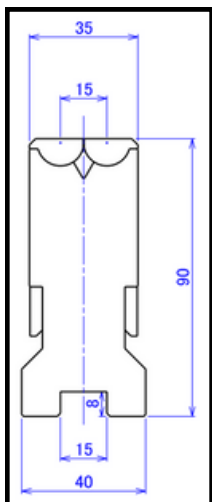
- Die Length 50/100/200/500mm
- Material thickness: 0.3~2.3



WBP230

700 (kN/m)

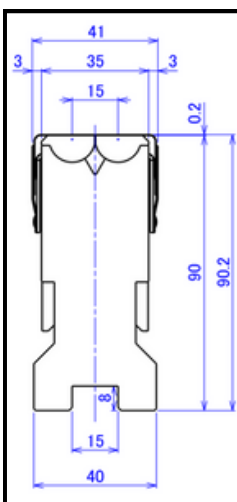
- Die Length 50/100/200/500mm
- Material thickness: 0.3~2.3



WB350

1000 (kN/m)

- Die Length 50/100/200/500mm
- Material thickness: 0.5~3.2



WBP350

1000 (kN/m)

- Die Length 50/100/200/500mm
- Material thickness: 0.5~3.2

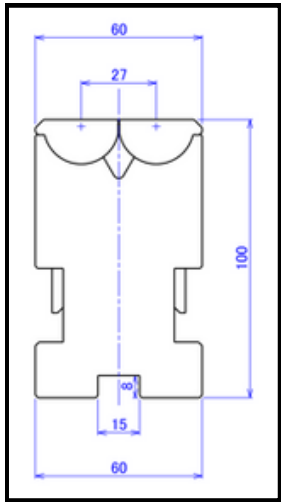
WB SERIES

STANDART TYPE



Wing Bend

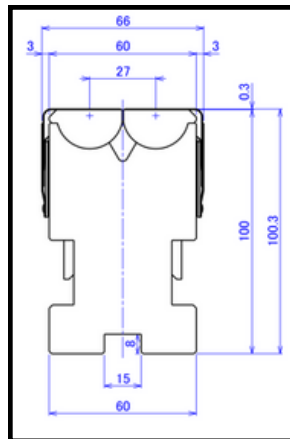
Wing Bend Plus



WB650S

1500 (kN/m)

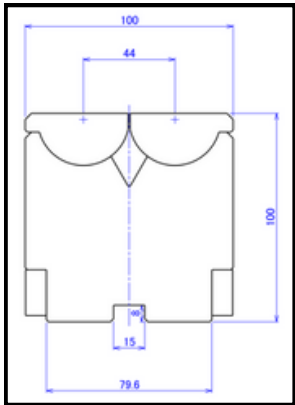
- Die Length 50/100/200/500 mm
- Material thickness: 1.2~6.5



WBP650S

1500 (kN/m)

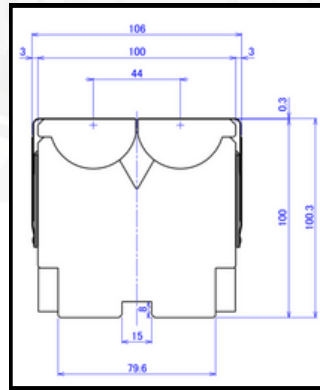
- Die Length 50/100/200/500mm
- Material thickness: 1.2~6.5



WB950

2000 (kN/m)

- Die Length 100/200mm
- Material thickness: 6.5~9.5



WBP950

2000 (kN/m)

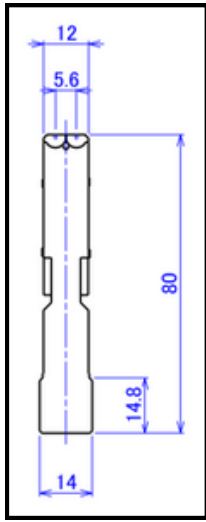
- Die Length 100/200mm
- Material thickness: 6.5~9.5

WB SERIES

AMADA TYPE



Wing Bend

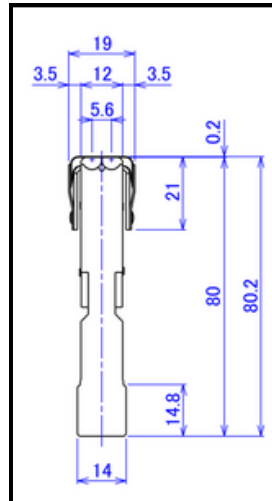


WB120

500 (kN/m)

- Die Length 50/100/200/500 mm
- Material thickness: 0.3~1.2

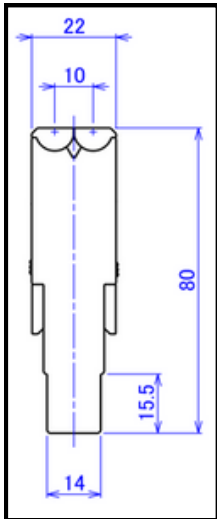
Wing Bend Plus



WBP120

500 (kN/m)

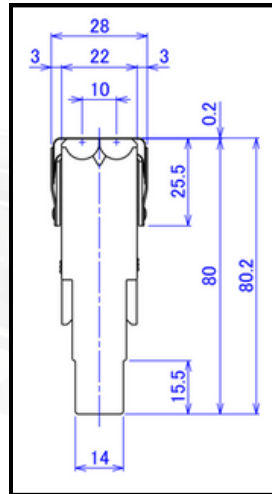
- Die Length 50/100/200/500 mm
- Material thickness: 0.3~1.2



WB230

700 (kN/m)

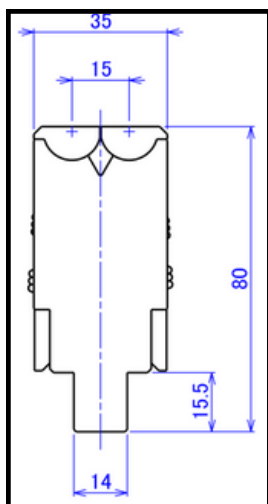
- Die Length 50/100/200/500 mm
- Material thickness: 0.3~2.3



WBP230

700 (kN/m)

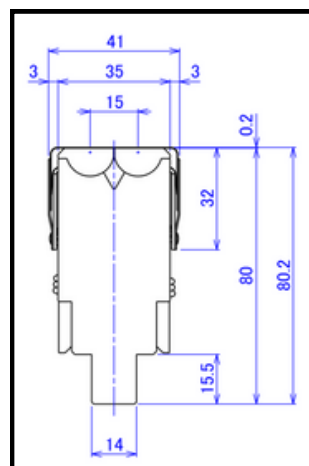
- Die Length 50/100/200/500 mm
- Material thickness: 0.3~2.3



WB350

1000 (kN/m)

- Die Length 50/100/200/500 mm
- Material thickness: 0.5~3.2



WBP350

1000 (kN/m)

- Die Length 50/100/200/500 mm
- Material thickness: 0.5~3.2

WB SERIES



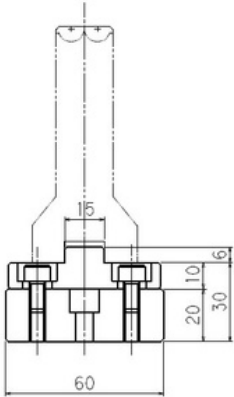
Range Of Processing Work Pieces Thickness

板厚 (t)	0.5	0.6	0.8	1	1.2	1.4	1.6	2	2.3	2.6	3	3.2	3.6	4	4.5	5	6	7	8	9	10	
WB(P)120 (0.3~1.2)		V4																				
			V6																			
				V7																		
WB(P)230 (0.3~2.3)				V8																		
					V10																	
						V12																
							V14															
WB(P)350 (0.5~3.5)							V16															
								V18														
									V20													
WB(P)650S (0.5~6.5)										V25												
											V32											
WB(P)650 (1.2~6.5)												V40										
													V50									
WB(P)950 (6.5~9.5)																						
																						V80



“In addition to our own products, we carry tools from other top manufacturers such as Trumpf, Baykal, and more.”

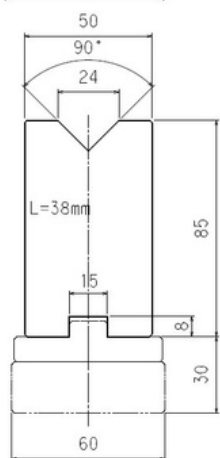
ACCESSORIES & ADAPTERS



WB001

Rail & Pleate

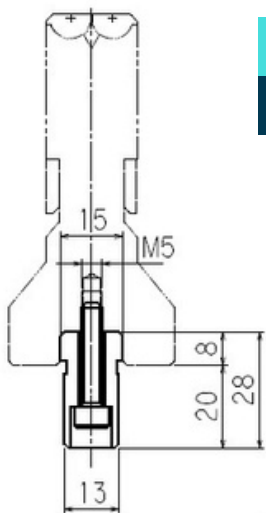
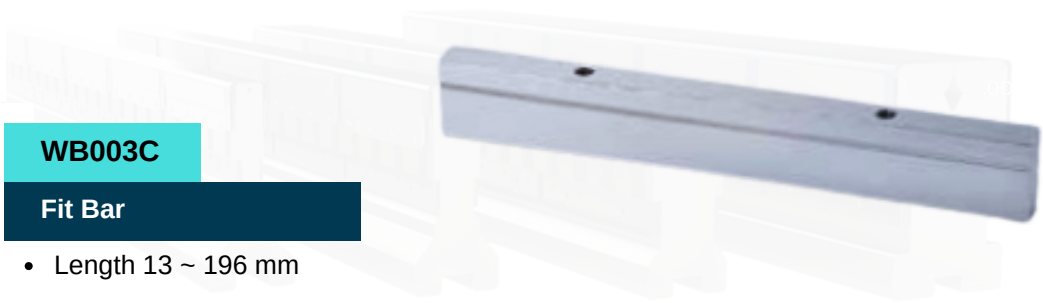
- Rail Length 415 / 835 mm



WB002

Centering Jig

- Jig Height 85 mm



WB003C

Fit Bar

- Length 13 ~ 196 mm



Slider

SLP120/230/350/650S

- Length 50/100 ~3000 mm

TSH
TOKYO SEIMITSU HATSUJO CO.,LTD.

HOW TO ORDER



Tokyo Seimitsu Hatsujo.co.,Ltd



<http://www.to-hatsu.co.jp>



wa.me/818021409299



<http://linktr.ee/tohatsu>